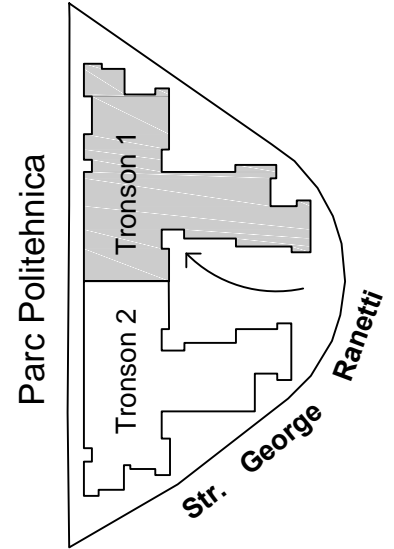
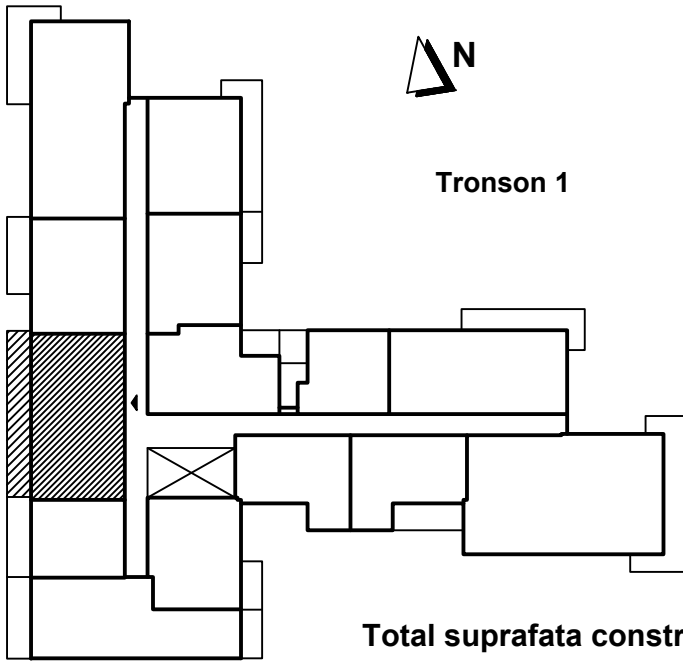
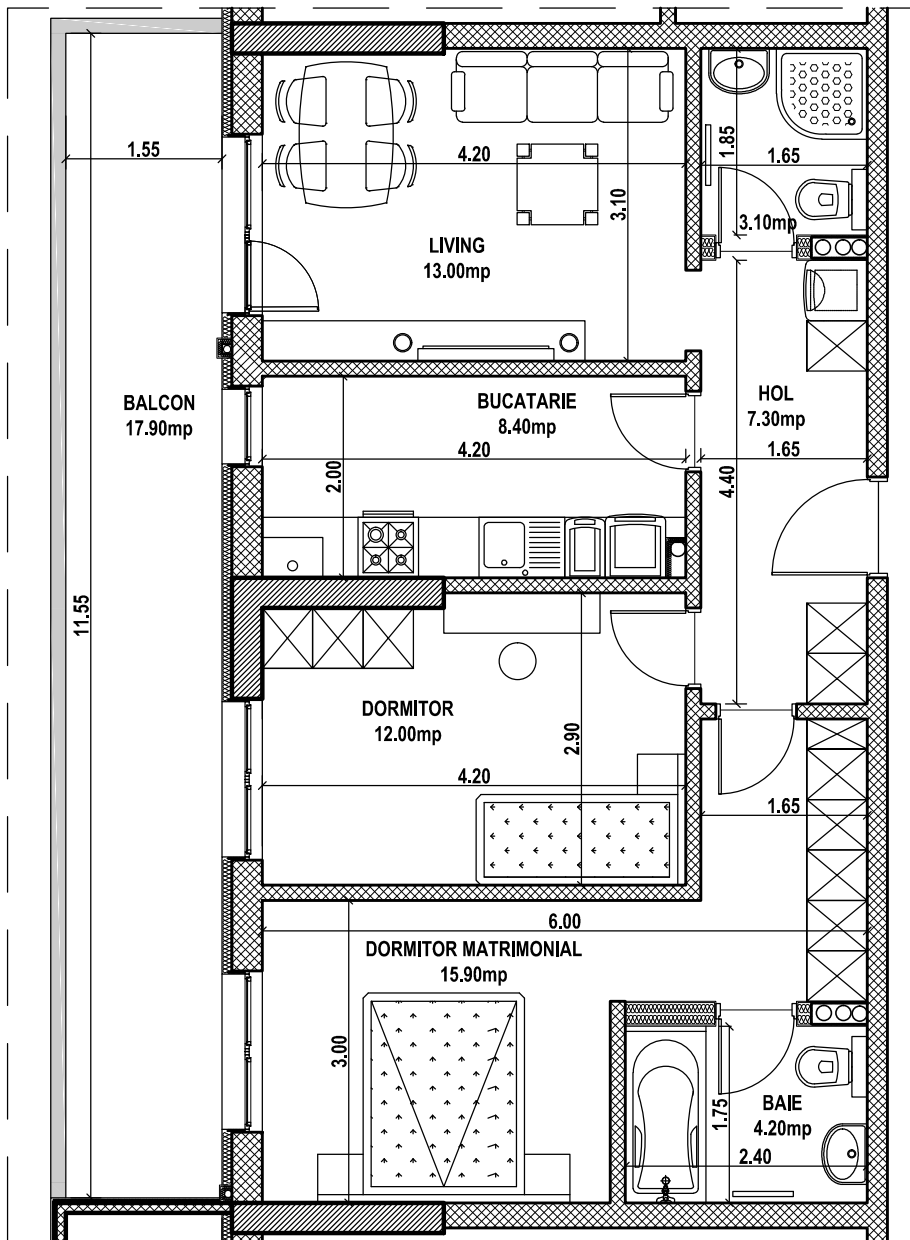


Apartament 3 camere - 1204 /1404 /1604, etaj 2 /4 /6 tronson 1, Str. George Ranetti, Nr. 2-8, Sector 6



Total suprafata construita apartament = 97.20 mp, din care:
 - suprafata construita balcon = 20.00 mp
 Total suprafata utila apartament = 81.80 mp



AP. 1204/
1404/1604